

PEOPLE TREE  
**HEAD & NECK  
INSTITUTE**  
A HOSPITAL FOR  
EVERY SENSE





## MISSION

To provide each and everyone a quality of care we would want for ourselves, our parents, children, family and friends.

## VISION

To touch, move and inspire a billion people.

## VALUES

- P** PATIENTS FIRST always
- E** EXCELLENCE in all that we do
- O** OPEN & TRANSPARENT
- P** PRIVILEGED TO SERVE PEOPLE
- L** LEARNING & INNOVATION
- E** ETHICAL & ACCOUNTABLE

Dear Friends

Greetings from all the members of PEOPLE TREE Head and Neck services. It is our pleasure and privilege to provide the scope of service document regarding Integrated Head and Neck Services at People TREE Hospitals.

We have an incredible team of doctors and paramedical staff who believe in our vision and mission with core aim to provide quality health care at affordable cost in a caring environment. We are slowly progressing into developing multidisciplinary teams and medical staff developing areas of special interest. This has certainly helped us to improve care and deliver health care in a more systematic way and be prepared for the unexpected complexities of medicine.

Our belief to reach more patients has led us to open satellite centers, making it possible for patients to access health care closer to home. We are also constantly updating our knowledge by conducting workshops, conferences, and visiting centers of excellence to constantly improve. We are bringing in best practices from around the world to suit the complexities of Indian health care needs. Incorporation of Clinical governance with evidence based practice, audit, research, and constant training has led to accountability and transparency in health care delivery. Patient feedback and surveys are now mandatory and we constantly seek to improve the quality of care provided.

We would like to introduce our services, the doctors and medical staff who work tirelessly to meet the standards we seek in delivering the healthcare we want for our family, friends and ourselves...!

### **Dr. Chandrasekar Chikkamuniyappa**

CEO & Senior Joint Replacement Surgeon  
PEOPLE TREE Orthopaedics

### **Dr. Ravi Sachidananda**

MS, DNB, MRCS, DOHNS, Msc (Voice), FRCS (ORL-HNS)  
Fellowship in Head and Neck and Reconstructive Surgery, (Canada)  
Consultant ENT/Head and Neck Surgeon  
Chief - PEOPLE TREE Head & Neck Institute

### **Dr. Srividya Rao Vasista**

BDS, PGDip in Clinical Psychology  
Consultant Dentist (Special interest in preventive dentistry and endodontics)

Coming together is a beginning. Keeping together is progress.  
Working together is success

- Henry Ford

## PEOPLE TREE HEAD & NECK INSTITUTE

People Tree Hospital is pleased to offer comprehensive and compassionate ENT and Head & Neck care. Our team comprises of a group of well trained Doctors, Audiologists, Speech Therapists and Nurse practitioners committed to provide cutting edge ENT care. The ENT team has a broad range of expertise in the field of Otolaryngology and work in close conjunction with Oncologists, Dermatologist, Paediatricians and Neurologists in managing complex disorders of the Head and Neck. The team provides a multidisciplinary environment and optimizes the 'best care' for the patient. The team is fully committed to affordable, ethical and evidence-based ENT and Head and Neck practice.

### Outpatients and Operating Room

The hospital has dedicated ENT consultation rooms at People Tree Hospitals (PTH) Yeshwanthpur, Bangalore. The team is backed by an enthusiastic diagnostic team involving Radiologists, Pathologists and Laboratory services to provide 'one stop' diagnostic service for your ENT /Head and Neck problems. Currently this rapidly expanding ENT unit has the following provisions

- Microscopy of ear and suction clearance
- Nasal endoscopy (Endoscopic examination of the nose and sinus openings)
- Flexible/rigid laryngoscopy to examine the voice box
- Audiometry and other hearing assessment, Hearing aid fitment
- Minor facial plastic and ENT procedures (earlobe repair, Botox and fillers)

The hospital has a dedicated ENT theatre for routine ENT operations and three laminar flow theaters for Major Head and Neck and more complex ENT surgeries.



## SUBSPECIALTY SERVICES

### Head and Neck Surgery :

People Tree Hospital offers comprehensive Multidisciplinary Head and Neck Care for North Bangalore and surrounding region.

The integrated Head and Neck team at People Tree Hospitals offers medical and surgical treatment for noncancerous and cancerous conditions of the Head and Neck region. The team works closely with Radiation Oncologists, Plastic Surgeons, Medical Oncologists and Speech Therapists to deliver personalized treatment plans. The common conditions treated are

- Parathyroid adenomas
- Salivary gland masses
- Skin cancer
- Lip cancer
- Oral cancer
- Tonsil cancer
- Sinus and skull base cancer
- Micro-vascular reconstruction



### Diagnosis

Detecting head and neck cancer in the early stages and treating it accurately, significantly improves outcome. When and where necessary, patients will be offered immediate and cost-effective diagnostic tests including fine needle aspiration cytology, biopsy, upper aero-digestive tract endoscopy, blood tests and appropriate radiological investigations.

### Treatment

| Common Ablative Surgeries Performed   | Reconstructive Surgeries   |
|---|--|
| Thyroidectomy / Neck Dissections / Composite resections / Laryngectomy / MLS / Oral cancer Surgeries / Parotidectomy / Skull base surgeries | Local Flaps / Pedicled flaps / Radial Forearm flap/ALT / Free Fibular Flap/Lateral arm flaps |

People Tree Hospitals is dedicated to comprehensive and customized care for people with benign (not cancer) or malignant (cancer) tumors of the head and neck region. All the options of treatment will be discussed in the Tumour Board with an intent to give the best chance of cure for the patient. Cost effective, evidence-based treatment options will be discussed with the patients offering them an informed choice regarding treatment. Head and neck surgery and Chemotherapy is available at People Tree Hospitals and patients needing Radiotherapy are seen by the Clinical Oncologists for further treatment in an associated hospital.

### Otology / Neurotology :

ENT team offers full range of ear care from medical to surgical management of ear infection and rehabilitation of hearing impairment. Further it runs a combined Vertigo clinic once a week with neurologists, audiologists and physiotherapists to assess and treat more complex patients with dizziness. Common conditions treated are

- Surgery for discharging ear and hearing loss (Mastoidectomy/Tympanoplasty)
- Facial palsy (Decompression / Brow lift / Gold weight implants / static and dynamic procedures)
- Glomus tumours and cancers of the temporal bone
- Multidisciplinary Vertigo clinic
- Bone anchored hearing aids
- CP angle Lesions

People Tree Hospital offers comprehensive Multidisciplinary Head and Neck Care for North Bangalore and surrounding region.

The integrated Head and Neck team at People Tree Hospitals offers medical and surgical treatment for noncancerous and cancerous conditions of the Head and Neck region. The team works closely with Radiation Oncologists, Plastic Surgeons, Medical Oncologists and Speech Therapists to deliver personalized treatment plans. The common conditions treated are



**Glomus Tumour excision**



**Surgery for complicated Ear infections**

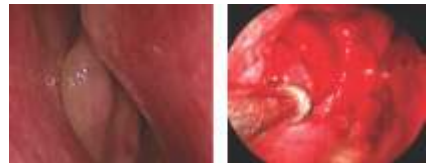


**Bone Anchored hearing Aid**

## Rhinology and Facial Plastic Surgery

The ENT team offers full range of treatment for allergic rhinitis and sinusitis. We offer complete diagnostic tests like nasoendoscopy and skin prick tests to clearly establish the cause of sinus infection. Evidenced based medical treatment would be offered before contemplating any surgical treatment. Common conditions treated are

- Sinusitis
- Allergic rhinitis
- Nasal polyps
- Snoring and Sleep apnea
- Rhinoplasty and nasal reconstruction
- Surgeries for tear duct obstruction (Lacrimal Clinic)
- Endoscopic treatment of Cancer of the nose/ approach surgeries to skull base tumors
- Blepharoplasty and brow lift
- Surgery of Facial nerve palsy



**Endoscopic treatment of Sinus Infection and Complex Skull Base Neoplasm**

## Paediatric ENT and Voice (Laryngology)

PTH is a tertiary care center for management of Paediatric patients. The unit has a committed team of Paediatricians managing the PICU and NICU. The ENT team provides support in assessing and managing airway related problems in children. Further we also offer full range of service to patients with voice disorder including speech therapy and Microlaryngeal surgery/Phonosurgery/Botox treatment where and when required. Common conditions treated are

- Paediatric airway assesment
- Paediatric Sleep apnea
- Glottis and subglottic stenosis
- Vocal nodules and other lesions of vocal cord
- Vocal cord paralysis
- Spasmodic dysphonia
- Botox Clinic



Vocal fold polyp

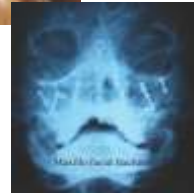
## Maxillofacial and Orthognathic Surgery

- Treatment of Maxillofacial trauma and Fractures
- Dentofacial deformities (abnormally shaped jaws or faces)
- Oral pathological problems (cysts or tumors of the jaws and associated areas including cancer)
- Orthognathic surgery
- Temporomandibular joint disorders
- Facial injuries
- Implant dentistry



Orbital Floor

Reconstruction  
after Trauma



## Audiology, Hearing Aids, Speech Therapy and EMG

People tree hospitals is pleased to offer comprehensive hearing and speech care. The Hearing and speech clinic provide services to people of all ages with hearing and speech disorders. It works closely with ENT Surgeons, Paediatricians and Neurologists to provide multidisciplinary care. It adapts best practices and technologies from around the world and engages patients and their family in meaningful activities. The team is fully committed to affordable, personalized and ethical clinical practices.

The unit has a dedicated facility at the hospital to provide outpatient and inpatient care for people with hearing and speech problems.



## Audiology and Aural Rehabilitation

- **Pure tone and Speech Audiometry** - to assess for hearing impairment in adult and children
- **Tympanometry** - to assess middle ear functioning
- **Brainstem Auditory Evoked Response (BAER/ABR)** - objective hearing tool to assess babies and children with suspected hearing impairment.
- **Newborn hearing screening with Oto - acoustic emission testing**
- **Visual response audiometry** - to assess hearing in children prior to the age of 3 years.
- **EMG studies**
- **Hearing aid Solutions** - The Audiology Clinic dispenses some of the most advanced hearing aids at competitive prices. The hearing aids are customised to individual needs and requirements. Full range of hearing aids are available and are dispensed only after a thorough trial.



## Speech Disorders and therapy

Speech Clinic offers comprehensive services to children and adults with speech and swallowing disorders.

### Common disorders treated by speech therapy are

- Developmental speech and language delay in children
- Problems with swallowing disorders
- Voice disorders in adults and children
- Speech and swallowing disorders occurring as a result of stroke and nervous system disorders
- Speech and swallow disorders related to head and neck cancer treatment

The Speech Pathology Clinic offers services for inpatients and outpatients. The clinic is staffed by committed and experienced team of clinicians.

## Clinical governance and quality

People tree Hospitals has a framework through which members of the team are accountable for continually improving the quality of service provided and safeguarding high standards of care.

The team conducts regular Clinical governance meeting to audit performance in critical areas of patient care. Regular staff training programs, Research meetings, Morbidity and mortality meetings are conducted to optimize patient care. The hospital has been recognized as NABH I-safe within one year of its inception. Further it was awarded the Best Emerging hospital in India for the year 2014. Currently strong foundations are laid to make the hospital fully NABH Compliant.



# ADVANCED CENTRE FOR DENTAL CARE

At PEOPLE TREE Advanced Centre For Dental Care, it is our continuous endeavour to set the highest standards in hygiene and quality patient care. Our team of highly skilled and experienced specialists take care of all your dental needs assisted by the latest advances in technology. Visit us for preventive, corrective and cosmetic treatments today.

## DENTAL CARE SERVICES

### PREVENTIVE PROCEDURES

- Oral Prophylaxis {Cleaning & Polishing}
- Pit and Fissure Sealants
- Fluoride Application



### CHILD CARE DENTISTRY

- Fillings
- Pulpotomy {Specialised RCT for children}
- Stainless Steel Crowns
- Sedation Dentistry



### CONSERVATIVE PROCEDURES

- Direct Filling
- Inlays
- Onlays
- Root Canal Treatment
- Endodontic Surgeries



### REPLACEMENT PROCEDURES

- Fixed Partial Dentures
- Crowns and Bridges
- Removable Partial Dentures
- Implants



### COSMETIC PROCEDURES

- Bleaching
- Direct Veneers
- Indirect Veneers
- De-pigmentation of Gums
- Tooth Jewellery



### ORTHODONTIC PROCEDURES

- Fixed Orthodontics
  - Metal
  - Tooth Coloured (Ceramic)
  - Lingual
- Removable Orthodontics
- Joint Orthodontics / Orthognathic Surgery
- Invisalign



### SURGICAL PROCEDURES

- Extraction (Tooth Removal)
- Impaction (Wisdom Tooth Removal)
- Trauma & Fractures
- Orthognathic Surgery
- Periodontal Surgery
- Major & Minor Oral Surgical Procedures



### LASER DENTISTRY

All Major & minor dental procedures can be performed with the help of lasers. "NO PAIN, NO BLEEDING"



### DENTASCAN FACILITY AVAILABLE

Dentascan is the most advanced technology available to render perfect and very detailed scans of teeth, upper and lower jaws.

- Axial
- Cross-section
- Panoramic 2D & 3D reconstructions





## WHAT PATIENTS SAY MATTERS

Doctor explains the condition well. He diagnosed the problem in no time. Gave all the open solutions that are available to cure and told us what he feels is the best option. Best part is there was no compulsion accept his solution only and asked us take time and decide

...Dr is very good, listens patiently and prescribes...

excellent listens your problems patiently. good to go to this doctor. well experienced person. you can go there for ENT problems most is a good person recommends u the most less cost effective things to eradicate the disease

...very nice doctor and very helpful. He listen to problem very patiently and does not rush for surgery. No commercial attitude and very family doctor like attitude..

he is best, he explained the process and procedures very well and good approach...

...very experienced doctor. This is our third visit and he was able to diagnose the problem accurately. He has at all three times ensured to provide the right treatment and there was no hype for bigger treatments or surgeries unnecessarily. I would recommend Dr.R anytime for ENT consultations...

Good doctor...His consultation was worth to follow..

Very nice Doctor & super...

**Ms. Comfort Otto** (Ghana)  
*Words cannot describe our sincere gratitude*



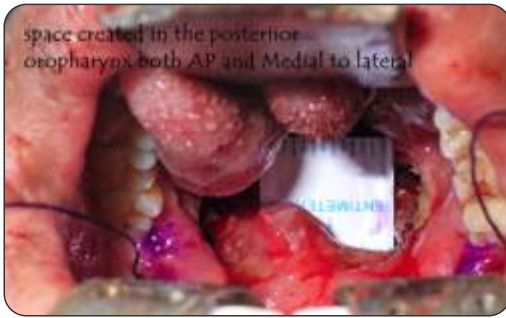
In the whole process Dr. S commitment and patience in advising an illiterate rural girl is commendable, besides of course in taking up the treatment at reduced charges. It was totally "a patient first" approach

It was just a casual encounter with Dr.S, Head of Advanced centre for Dental Care at PEOPLE TREE Hospital when I took my wife for a routine dental cleansing. I overheard her discussing on a case of dental implantation with a senior colleague. Suddenly that made me to recall the case of young Jyothi, a 21 old unmarried girl from a rural/agricultural background. She had lost an incisor in the front upper jaw in a small accident. Eligible boys rejected her. Some even told her parents that one would marry her if they get her teeth fixed. Her parents could not afford the cost of implantation. This girl had requested me to help her a couple of times. I spoke to Dr. S, who showed instant enthusiasm and empathy in the case. I volunteered to bear the cost of treatment. Jyothi was examined by Dr. S team who found the bone was pretty depreciated. They took an innovative approach doing a bone grafting in the cavity of missing teeth, harvesting a peace of bone from her lower jaw. It was a precision procedure, efficiently executed. Pain and the wound from the procedure are gone. Now Jyothi is waiting for her next appointment. I am very confident tat Jyothi will have a new beginning in her life.

## Media and Education

Head and Neck team is in forefront of academics ,charity and education. Team organizes teaching programmes for General physicians, Specialty doctors and colleagues through the IMA. Members of the team constantly update their knowledge by attending regular training sessions nationally and internationally.

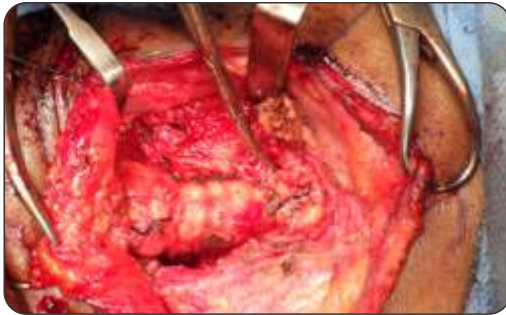
The doctors regularly contribute in media and conduct health education lectures in schools ,health camps and corporate organizations .



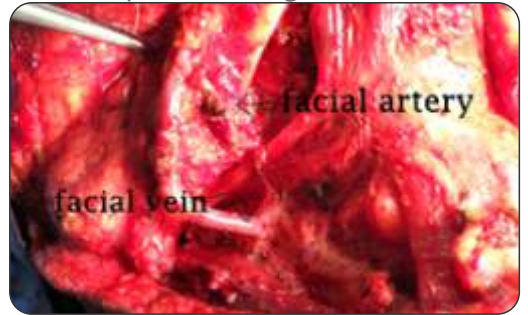
Pharyngoplasty for sleep apnea



Free Flaps for oncologic Reconstruction



Thyroidectomy



Neck dissection for Oncologic reasons



Facial nerve decompression/  
Ear Surgeries/ Lateral skull base surgeries



Modified neck dissection



Retrosternal Goitre surgery



Microlaryngeal surgery



Endoscopic sinus surgery



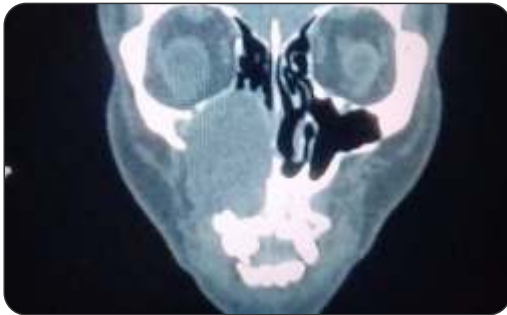
Cartilage Tympanoplasty



Salivary gland Surgery



Endoscopic tumour resection from nose



sinus tumour



Endoscopic tumour resection from nose

**Never doubt that a small group of thoughtful committed people can change the world, indeed it is the only thing that ever has**



**Dr. Ravi Sachidananda**

MS, DNB, MRCS , DOHNS, Msc {Voice},  
FRCS {ORL-HNS},  
Fellowship in Head and Neck and  
Reconstructive Surgery,{Canada}  
Consultant ENT/Head and Neck Surgeon

**Ravi** is a Fellowship trained ENT/Head & Neck Surgeon currently heading the ENT unit at People Tree Hospital. Having trained in India, UK and Canada

he brings in over 20 years of experience into the specialty. He offers a broad range of ENT/Head and Neck Service in addition to his subspecialty interests in Head and Neck Surgery Oncosurgery / Voice and Rhinology /Facial Plastic Surgery. He has authored and co-authored over 20 papers in peer review journals and presented over 40 research and audit papers in various National and international ENT forums around the world.



**Dr. Satish Kumaran**

BDS, MDS, MFDRCS{UK}  
Fellowship in Head and Neck Surgery  
Consultant Maxillofacial and Head and Neck Surgery

**Dr. Satish Kumaran** is a Oral And Maxillofacial Surgeon , with over 18 years experience in the field. He completed MDS - (Oral & Maxillofacial Surgery) from Saveetha Dental College and Hospital, Chennai (Madras) in 2005, Membership of the Faculty of Dental Surgeons (MFDS) from Royal College of Physicians and Surgeons (RCPS), Glasgow in 2011 and MRCS (UK)

from Royal College of Physicians and Surgeons (RCPS), Glasgow in 2012. He is a member of Association of Oral and Maxillofacial Surgeons of India (AOMSI), Royal College of Physicians and Surgeons of Glasgow (RCPSG) and Indian Dental Association. He provides broad range of services in the specialty including Temporomandibular Joint Disorder, Oral Surgical procedures, Orthognathic surgery , Impacted Tooth Extraction, Oral Cancer Treatment . He is a member of Head and Neck Oncology team.



**Dr. Kiran J**

MS, Mch  
{Plastic & Reconstructive Surgery}  
Consultant Plastic Surgeon

**Dr. Kiran** is a Plastic Surgeon trained from Amrita Institute of Medical Sciences at Cochin. He is trained in microvascular surgery and is a part of the Head and Neck team. His main area of interest are Head and Neck reconstruction, Craniofacial surgery, Cleft lip and palate.



**Dr. Vidya Janaki R**

MBBS, MS, DNB  
Consultant ENT/Otology & Paediatrc ENT

**Dr Janaki** , completed her under graduate training from MS Ramaiah hospital, Bangalore and Post graduate training from KIMS, Hubli. With More than seven years of post specialisation experience in Ear and Sinus surgery from Delhi. Other than general ENT surgeries she provides specialist expertise in Otology and Endoscopic nasal surgeries .



**Dr. Srividya Rao Vasista**  
BDS, PGDip in Clinical Psychology  
Consultant Dentist {Special interest  
in preventive dentistry and  
endodontics}



**Dr. Prakash Ramachandra**  
MRCP {UK}, FRCR {London}, CCST {UK}  
Consultant Head and Neck Oncology  
{Radiation and Medical Oncology}



**Dr. Veena Arali**  
BDS, MDS  
(Paed & Preventive Dentistry)  
Consultant Paediatric Dentist  
PEOPLE TREE Hospitals



**Dr. Krishna Prasad**  
DNB (Neurosurgery)  
Neurosurgery and  
Skull Base Surgery



**Dr. Ashwini Rachappa**  
MD {Yoga Therapy & Rehab},  
DNHE {Dietetics}  
Consultant Yoga and Dietician



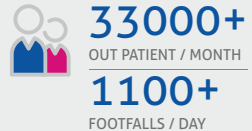
**Ms. Pankaja K P**  
Bsc (Speech and Hearing),  
MSc (Speech and Swallow)  
Speech - Language Pathologist



**Dr. Akshatha Shivakumar**  
MS, DNB  
Senior Registrar in  
Head and Neck Surgery



**Ms. Dhanya**  
BSc (Audiology)  
Audiology/Hearing aid  
and Aural Rehabilitation



**PEOPLE TREE Hospitals, 2, Tumkur Road, Goraguntepalya, Yeshwanthpur, Bengaluru 22**  
appointments@peopletreehospitals.com +91 9900091881 / +91 80 49599900

PEOPLE TREE Hospitals @ Raghavendra  
Dasarahalli, Tumkur Road, Bengaluru  
P: +91 9900511146

PEOPLE TREE Hospitals @ Meenakshi  
Hanumanthnagar, Bengaluru  
+91 80 267 55 800/ 901 / 402

PEOPLE TREE MAARGA  
Yelahanka Satellite Town, Bengaluru  
+91 80 4665 99 99

PEOPLE TREE Paediatrics @  
Rangadore Memorial Hospital  
Shankarapuram Basavanagudi  
+91 080 2698 3300

[www.peopletreehospitals.com](http://www.peopletreehospitals.com)

Touch • Move • Inspire